

テコム太郎 様

No.840001

申込人数: 8140人

全国人数 6916人 学内人数 246人

<00>TECOM

Table with columns for '総合成績' (Overall Results) and '禁忌肢' (Prohibited Limbs). It includes sub-columns for '種別' (Category), '総合' (Overall), '一般臨床' (General Clinical), '一般' (General), '臨床' (Clinical), '必修' (Required), '必修一般' (Required General), and '必修臨床' (Required Clinical). It lists scores, percentages, and ranks for various categories.

Table titled '臓器別 (一般)' (Organ-specific (General)). It lists various medical specialties such as '循環器' (Circulatory), '神経' (Neurology), '内代' (Internal Medicine), etc., along with the number of questions, correct answer rates, average scores, and deviations.

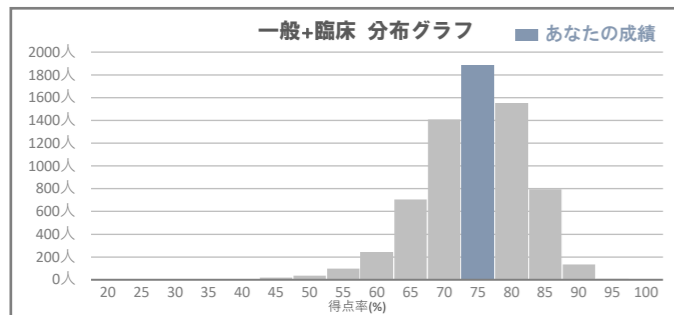
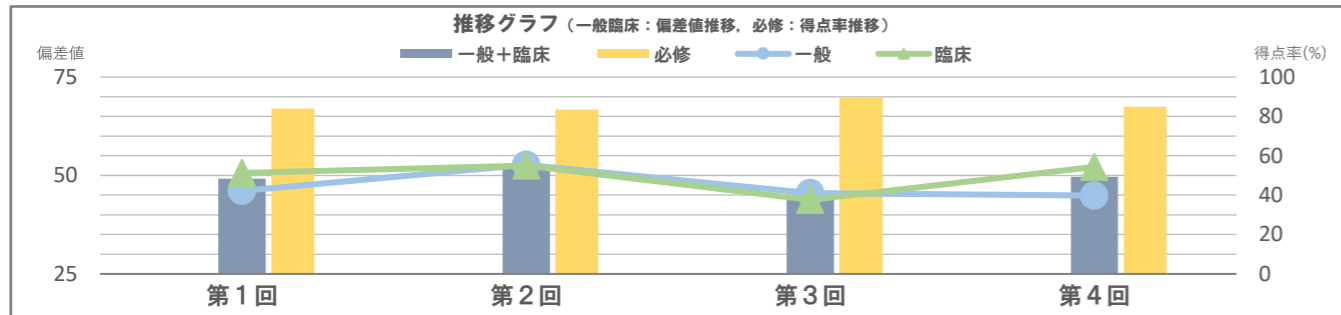


Table titled '正答率の高い問題' (Questions with High Correct Answer Rates). It lists '種別' (Category), '得点率' (Score Rate), '順位' (Rank), and '偏差値' (Deviation Score) for '一般' (General), '臨床' (Clinical), and '必修' (Required) categories.

Table titled '臓器別 (臨床)' (Organ-specific (Clinical)). It lists various medical specialties such as '循環器' (Circulatory), '神経' (Neurology), '内代' (Internal Medicine), etc., along with the number of questions, correct answer rates, average scores, and deviations.



解答分析 答: →正解, 英字 or × (計算問題) →不正解, 重→重複解答 未→未解答 不→不足解答

Large table for '解答分析' (Answer Analysis) showing question numbers (No.), answers, and correct answer rates for various categories. It includes a legend for '正答率60%以上 (必修は80%以上) の問題であなたが間違えた問題を表します' (Questions with 60% or higher correct answer rate (80% or higher for required) where you made a mistake).

Table titled '系統別' (System-specific). It lists '種別' (Category), '問題数' (Number of Questions), '正答率' (Correct Answer Rate), '平均' (Average), and '偏差値' (Deviation Score) for '一般' (General) and '臨床' (Clinical) systems across various specialties like '内科' (Internal Medicine), '外科' (Surgery), etc.

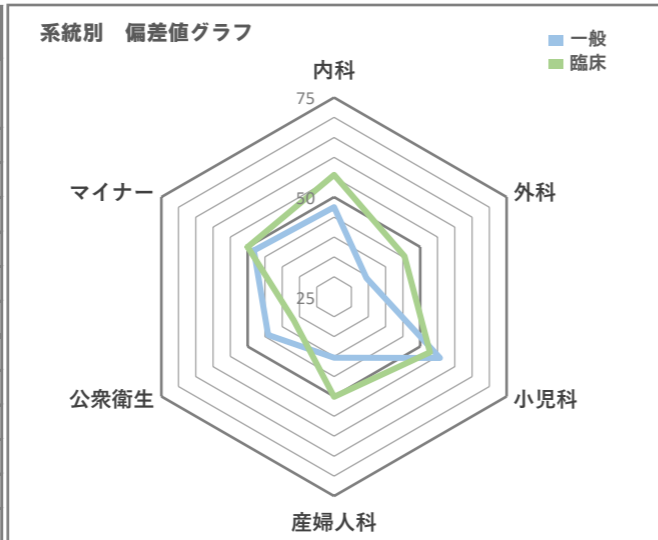


Table titled '総論・各論' (General/Specific). It lists '種別' (Category), '問題数' (Number of Questions), '正答率' (Correct Answer Rate), '平均' (Average), and '偏差値' (Deviation Score) for '一般' (General) and '臨床' (Clinical) sections, subdivided into '総論' (General) and '各論' (Specific).

